

FOR MORE INFORMATION ON WASTE MANAGEMENT IN OXFORD COUNTY
VISIT [WASTELINE.CA](https://wasteline.ca) OR DOWNLOAD THE WASTELINE APP

OXFORD COUNTY

21 Reeve Street, Woodstock
519-539-9800 or 1-866-537-7778
info@wasteline.ca
www.wasteline.ca

TOWNSHIP OF BLANDFORD-BLENHEIM

47 Wilmot Street South, Drumbo
519-463-5347 or 1-800-410-6882
www.blandfordblenheim.ca

TOWNSHIP OF EAST ZORRA-TAVISTOCK

90 Loveys Street, Hickson
519-462-2697
www.ezt.ca

TOWN OF INGERSOLL

130 Oxford Street, 2nd Floor, Ingersoll
519-485-0120
www.ingersoll.ca

TOWNSHIP OF NORWICH

285767 Airport Road, Norwich
519-667-2000
www.norwich.ca

TOWNSHIP OF SOUTH-WEST OXFORD

312915 Dereham Line
519-877-2702 or 519-485-0477
www.swox.org

TOWN OF TILLSONBURG

10 Lisgar Avenue, Tillsonburg
519-688-3009
www.tillsonburg.ca

TOWNSHIP OF ZORRA

274620 27th Line
519-485-2490 or 1-888-699-3868
www.zorra.ca

*This calendar is available in alternative formats
for the visually impaired.*



This calendar does not apply to City of Woodstock residents.



BLANDFORD-BLENHEIM
EAST ZORRA-TAVISTOCK
INGERSOLL
NORWICH
SOUTH-WEST OXFORD
TILLSONBURG
ZORRA

wasteline

OXFORD COUNTY WASTE MANAGEMENT SERVICES

SEPTEMBER 1, 2023 – AUGUST 31, 2024



WHAT'S INSIDE



Wasteline.ca	1	South-West Oxford Collection Dates	10	Brush, Leaf and Yard Waste Depots	19
Oxford County	2	South-West Oxford Recycling & Garbage Collection Map	11	Business Waste Management	20
Stay in the Know	3	Holiday Collection Pricing	12	Upcoming Changes to Ontario's Blue Box Program	21
Curbside Collection	4	Container Pricing	13	Waste Management and Education Centre	22
Tips for Set Out Success	5	Large Item Collection	14-15	Future Oxford	23
What Goes Where?	6-7	Waste Management Facility	16	Alternate Waste Options	24
Garbage and Recycling Collection	8	Waste Diversion Programs	17	Departments and Services	25
Garbage and Recycling Collection Maps	9	Food Waste Reduction	18		

WASTELINE.CA

Oxford's waste and recycling resource!

WHAT YOU'LL FIND:

Waste Management news
When is my pickup?
What goes where?
Where to buy bag tags
Waste sorting game

STAY CONNECTED!

-  @OxfordWasteline
-  Oxford County
-  Oxford County

ALSO AVAILABLE AS A SMARTPHONE APP!

View, print, or embed your calendar in Outlook, Google Calendar and iCal.

Sign up for reminders so you never miss your collection day!





Growing stronger together

Located in the heart of southwestern Ontario, at the crossroads of Highways 401 and 403, Oxford County has a population of approximately 130,000 people across eight area municipalities that are “growing stronger together.” As a partnership-oriented, two-tier municipal government, Oxford County is emerging as a leader in sustainable growth through the Future Oxford Community Sustainability Plan and County Council’s commitment to achieving 100% renewable energy, becoming a zero waste community, and working towards zero poverty.

Situated in one of Ontario’s richest areas for farmland, agriculture is a key industry that serves as a springboard for some of the sustainable industries that are steadily diversifying the local economy. Oxford County offers a thriving local arts, culture and culinary community, as well as conservation parks, natural areas and more than 100 kilometres of scenic trails. The Oxford County Administration Building is located in Woodstock, Ontario. Visit www.oxfordcounty.ca or follow our social media sites at www.oxfordcounty.ca/social.

STAY IN THE KNOW

ROAD CONSTRUCTION & NEW SUBDIVISIONS

During scheduled road construction, continue to place your garbage and recycling containers at the curb, as usual. If our vehicles are unable to access the area, our road work contractors will collect these items and move them to a central area for pick-up. Please mark your house number on garbage and recycling containers to ensure they are returned to the correct address.

New subdivisions can have a lot of construction vehicles blocking the roadways. If our vehicles cannot maneuver safely, please hold on to your material until the following week for collection.

SERVICE INTERRUPTIONS

Collection changes or interruptions can happen at any time—for weather, road closures or other issues. Picking up your garbage and recycling on time is our #1 priority, but if there’s a reason we can’t get to you, we’ll let you know as soon as possible.

Sign up for service alerts from www.wasteline.ca

Visit www.oxfordcounty.ca

Follow Wasteline and Oxford County on Twitter

Please note that any updates to this calendar will be posted to www.wasteline.ca



CURBSIDE COLLECTION



WHAT IS A RESIDENT RESPONSIBLE FOR?

Keep set out neat at the curb

- Do not overfill containers
- Place on level ground
- Remove rejected material from curb promptly
- Clean up material if containers fall over before collection occurs
- Place material out by 7a.m. Anything after this time risks not being collected.

WINTER COLLECTION TIPS!

- White bags are hard to see in the winter; use dark coloured bags
- Do not place material on top of snow banks
- Keep material out of the path of snow plows and sidewalk plows
- Make sure there is a clear, safe path for collectors. They have to keep one foot on hard ground.

WHY WAS MATERIAL NOT COLLECTED?

Check to see if a sticker has been left on top of the material. If there is no sticker and your neighbours on both sides of the street have been collected, and/or it is past 7p.m., call 519-539-9800 ext. 3159 to check on your location. You can also check out wasteline.ca or [@WastelineOxford](https://twitter.com/WastelineOxford) on Twitter for municipality-wide issues, such as weather or traffic-related issues.

BUY YOUR BAG TAGS

Bag tags are available for purchase online at www.wasteline.ca/bagtags or at various retail outlets throughout the County.

A complete list of retail outlets is available online at www.wasteline.ca under "Garbage Program".

TIPS FOR SET OUT SUCCESS

- Secure your materials in your Blue Box by placing heavier materials on top.
- Use a lid to keep items secure, and do not overfill your containers.
- Set-outs should be clearly visible from the road, placed on a level surface no more than 1 m (3.3 ft) from the curb or roadside.
- For the safety of waste collectors, garbage bags and containers must not weigh more than 20kg (44lbs).
- Personal hygiene products, including face masks, tissues, diapers and cleaning wipes, go in the garbage, not your Blue Box.
- Hazardous waste, such as batteries, sharps, and medical waste, does not belong at the curb. Please bring it to a Hazardous Waste Depot for free and proper disposal. For details, visit www.wasteline.ca and click "Hazardous Waste."

WHAT GOES WHERE? WASTE SORTING TIPS

RECYCLING

- Aerosol containers (empty)
- Aluminum foil and trays
- Bakery transparent trays (Plastic #6)
- Black plastic food and beverage containers (#2 and #5)
- Boxboard (tissue, food boxes & pop cases)
- Cardboard (flattened, tied and bundled, no larger than 75cm x 75cm x 20 cm)
- Clear & coloured glass containers
- Coffee cup lids
- Coffee cups

- ! Placing unacceptable items in your Blue Box increases program costs. Not sure what can go into your Blue Box? Use the "What Goes Where?" tool on wasteline.ca or download the wasteline app.

- Drink/coffee takeout trays (moulded paper)
- Drink & soup boxes
- Envelopes
- Flyers
- Glossy posters/paper
- Magazines, catalogues & telephone books
- Metal & aluminum containers
- Milk & juice cartons
- Newspapers
- Paper
- Paper bags
- Pizza boxes (no food residue)

- Plastic bottles (pop, water, juice)
- Plastic clamshell packaging
- Plastic cookie trays
- Plastic food containers (tubs & lids)
- Spiral wound/cardboard cans (hot chocolate, coffee, crescent rolls)
- Yogurt containers (Plastic #5)

For City of Woodstock residents, find your Blue Box materials by visiting www.cityofwoodstock.ca

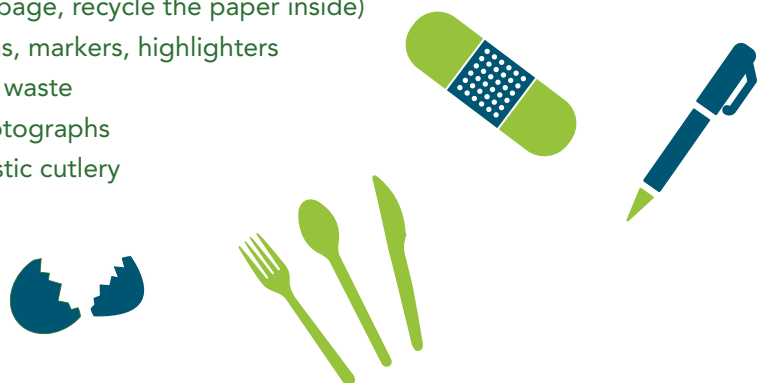


All items placed in the Blue Box must be free of liquid and food contaminants.

LANDFILL

- Bandages, first aid materials
- Bubble wrap
- Carbon paper
- Compostable plastic cutlery and takeout containers
- Food waste (if compost not available)
- Glassware & ceramic ware
- Laminated material
- Notebooks & agendas (Cover is garbage, recycle the paper inside)
- Pens, markers, highlighters
- Pet waste
- Photographs
- Plastic cutlery

- Paper towels, tissues, napkins
- Plastic lunch bags
- Saran wrap
- Shiny wrapping paper
- Stickers/labels
- Straws
- Styrofoam food packaging and beverage containers
- Waxed paper



WASTE DIVERSION

You can divert the following items from the landfill by delivering them to a depot for recycling. See page 16-17 for information on depots.

- Bulky styrofoam
- Construction & demolition waste
- Clothing and textiles
- Electronics
- Freon-containing appliances
- Hazardous waste
- Leaf and yard waste
- Plastic shopping bags & plastic film (at recycling depot)
- Recycling and cardboard
- Scrap metal
- Tires



NEED TO DISPOSE OF SOMETHING NOT ON THE LIST?

Visit www.wasteline.ca or download the Wasteline app and use the "What goes where?" tool.



519-539-9800 | 1-866-537-7778
info@wasteline.ca | wasteline.ca

GARBAGE & RECYCLING COLLECTION

GARBAGE REQUIREMENTS

- All garbage must be contained in a bag, with no loose garbage in a container
- Have garbage at the curb before 7 a.m. on your collection day. Anything out after this time risks not being collected.
- Place no further than one metre from municipal curb
- Bags must not be broken or ripped
- Garbage set outs must not weigh more than 20 kgs (44 lbs)
- Both ends of the bag tag must be visible, wrapped around the neck of the bag



BAG TAG PROGRAM

- \$2 per tag, no tax
- No minimum or maximum purchase amounts
- Debit or credit purchases are subject to store policies regarding extra charges

NEW: Online bag tag option
Visit www.wasteline.ca/bagtags for a list of vendors and to order bag tags online

HOW MANY DO I NEED?

- One bag tag is needed for:
 - Each normal-sized bag or container (128L) with a maximum of 20 kgs (44 lbs)
- Two bag tags are needed for:
 - Bags larger than 76cm - 96 cm and containers (129-240L) with a maximum of 20 kgs (44 lbs)

For details on size restrictions and weight requirements, visit www.wasteline.ca

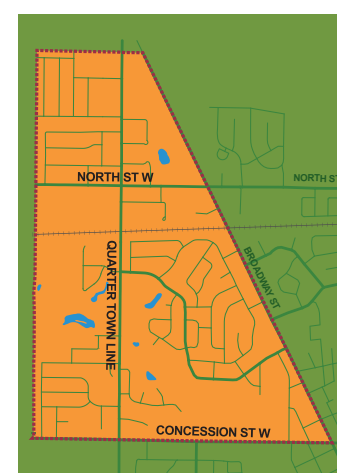
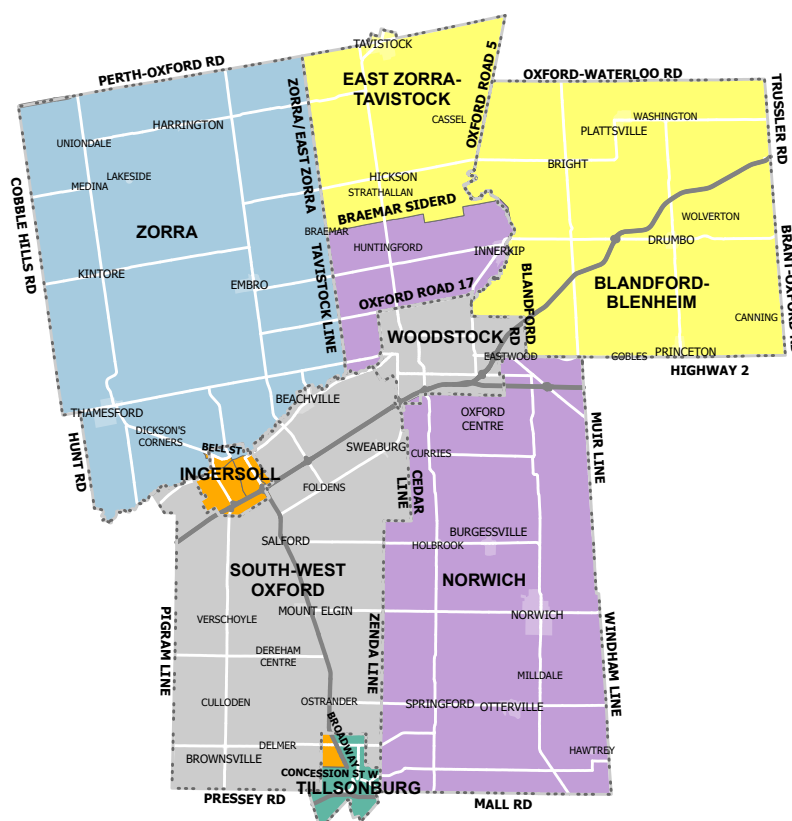
BLUE BOX COLLECTION

- Put your recycling at the curb before 7 a.m. on your collection day. After 7 a.m., you accept the risk that it may be missed.
- Containers should be rinsed and free of food.
- Clear plastic bags are for shredded paper only. Other materials in plastic bags will not be collected.
- Drivers do not sort material at the curb. Contaminated Blue Boxes will not be collected.



GARBAGE & RECYCLING COLLECTION AREAS

- MONDAY**
Zorra / Ingersoll North
- TUESDAY**
Ingersoll / Tillsonburg Northwest
- WEDNESDAY**
Tillsonburg
- THURSDAY**
Norwich / East Zorra-Tavistock
- FRIDAY**
Blandford-Blenheim / East Zorra-Tavistock



INGERSOLL NORTH
Collection in this area occurs on Monday

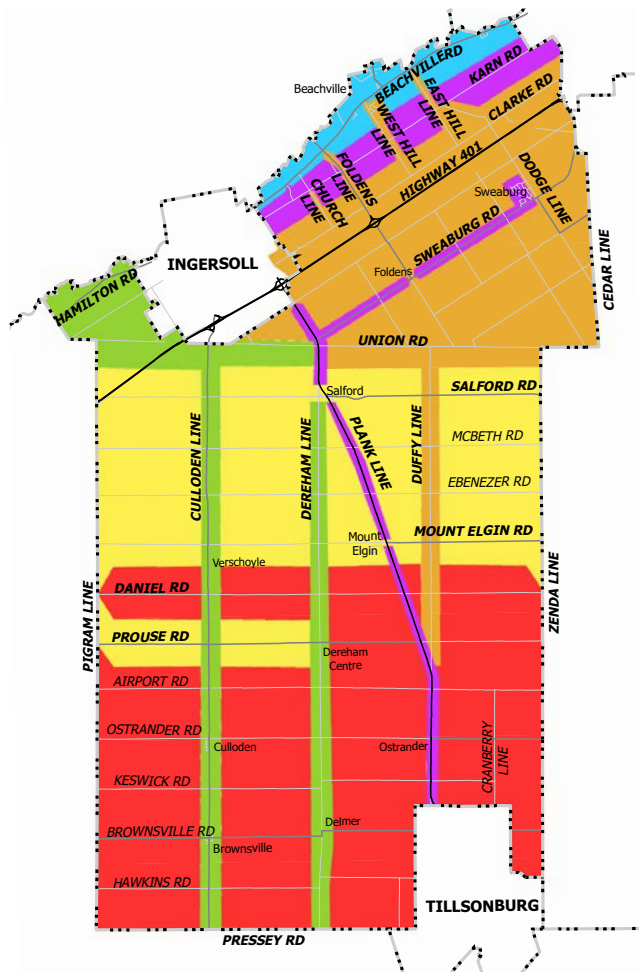


TILLSONBURG NORTHWEST
Collection in this area occurs on Tuesday

TOWNSHIP OF SOUTH-WEST OXFORD COLLECTION DATES

2023	Red Dates	Yellow Dates	Green Dates	Purple Dates	Orange Dates	Blue Dates
September	1, 12, 20, 28	5, 13, 21, 29	6, 14, 22	7, 15, 25	8, 18, 26	11, 19, 27
October	6, 17, 25	10, 18, 26	2, 11, 19, 27	3, 12, 20, 30	4, 13, 23, 31	5, 16, 24
November	2, 13, 21, 29	3, 14, 22, 30	6, 15, 23	7, 16, 24	8, 17, 27	1, 9, 20, 28
December	7, 15, 27	8, 18, 28	1, 11, 19, 29	4, 12, 20	5, 13, 21	6, 14, 22

2024	Red Dates	Yellow Dates	Green Dates	Purple Dates	Orange Dates	Blue Dates
January	5, 15, 23, 31	8, 16, 24	9, 17, 25	2, 10, 18, 26	3, 11, 19, 29	4, 12, 22, 30
February	8, 16, 27	1, 9, 20, 28	2, 12, 21, 29	5, 13, 22	6, 14, 23	7, 15, 26
March	6, 14, 22	7, 15, 25	8, 18, 26	1, 11, 19, 27	4, 12, 20, 28	5, 13, 21
April	2, 10, 18, 26	3, 11, 19, 29	4, 12, 22, 30	5, 15, 23	8, 16, 24	1, 9, 17, 25
May	6, 14, 23, 31	7, 15, 24	8, 16, 27	1, 9, 17, 28	2, 10, 21, 29	3, 13, 22, 30
June	10, 18, 26	3, 11, 19, 27	4, 12, 20, 28	5, 13, 21	6, 14, 24	7, 17, 25
July	5, 15, 23, 31	8, 16, 24	9, 17, 25	2, 10, 18, 26	3, 11, 19, 29	4, 12, 22, 30
August	9, 19, 27	1, 12, 20, 28	2, 13, 21, 29	6, 14, 22, 30	7, 15, 23	8, 16, 26



ADDITIONAL REMINDERS & DATES



Plastic Film Depot located at the Beachville Fire Hall (434696 W Hill Line)



For more information on our diversion programs, visit wasteline.ca and select "Special Recycling"



Remember to have your material to the curb by 7 a.m. to avoid being missed.



Large Article Collection - week of June 3



Download the wasteline app for reminders



HOLIDAY COLLECTION

WILL YOUR COLLECTION DAY CHANGE?

Residences and businesses in Blanford-Blenheim, Tillsonburg, Norwich, South-West Oxford, and East Zorra-Tavistock will have regularly scheduled collection during the holidays.

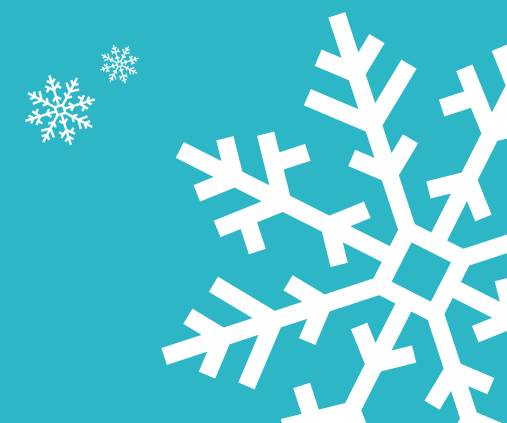
WATCH FOR THE FOLLOWING CHANGES IN INGERSOLL (NORTH) AND THE TOWNSHIP OF ZORRA

ORIGINAL DAY	MUNICIPALITY	NEW COLLECTION DAY
Monday, December 25	Township of Zorra	Saturday, December 23
Monday, December 25	Ingersoll (North)	Saturday, December 23
Monday, January 1	Township of Zorra	Saturday, December 30
Monday, January 1	Ingersoll (North)	Saturday, December 30

Follow these simple steps for recycling this holiday season:

- Remove all tape, plastic film, twist ties and other objects before recycling cardboard packaging.
- Break down, flatten and bundle all cardboard boxes, with bundles no larger than 75 x 75 x 20 centimetres.
- Wrapping paper can be recycled, except for foil-based paper.
- Remove all ribbons and bows. Save and reuse for next year where possible.

Remember, the bulky Styrofoam often found in larger gifts can be dropped off at the Oxford County Waste Management Facility, Tillsonburg Transfer Station and Woodstock EnviroDepot for recycling.



CONTAINER PRICING

2023 BLUE BOX PRICING

83 Litre Blue Box	\$6.20/box
Lids for Blue Box (80 Litre)	\$2.70/lid
Apartment-size container	\$3.50/each
Multi-residential totes*	\$36.00/tote
Business totes*	\$72.00/tote

These items are sold at your local municipal office, the Oxford County Administration Building and the Oxford County Waste Management Facility.

Pricing subject to change, please refer to the Fees and Charges By-law for pricing details at oxfordcounty.ca.

*Contact the County for Totes. Totes are only available for sale to multi-residential buildings and businesses.

GREEN CONE \$50

Includes: Container, instructions, hardware, accelerator powder and accelerator applicator. Additional accelerator is available for \$4/packet.



WHAT GOES IN:

- Fruits, vegetables
- Food scraps, tea bags, coffee grounds
- Meat, bones, dairy
- Small amounts of pet waste



DON'T PUT IN:

- Large amounts of animal/pet waste
- Garbage, plastic
- Rocks, stumps
- Hazardous waste



BACKYARD COMPOSTER \$10

Includes: Container, instructions, hardware, lids



WHAT GOES IN:

- Paper towels, napkins
- Small amounts of yard waste (grass, twigs, straw, weeds)
- Fruits and vegetables, egg shells and coffee grounds



DON'T PUT IN:

- Meat, fish, dairy, bones
- Animal/pet waste
- Garbage, plastic
- Rocks, stumps
- Hazardous waste
- Fats, oils, grease



LARGE ITEM COLLECTION

RESIDENTIAL PROGRAM ONLY



Set out by **7 a.m.** the Monday of your collection week. Late set outs will not be collected.



Max weight for any item is **45 kg** or 100 lbs.



Place items no more than **one metre** from the curb.



Items must be on **your property**, not across roads/ditches, and easily visible (clear of tall grass)



Do not place **small items** on top of larger items. Inaccessible items will be left behind.



Bag tags are NOT required for large items.

DOES YOUR ITEM QUALIFY?

- Does it weigh more than 45 kg (100 lbs)?
- Can it be broken down into a garbage bag?
- Is it eligible for a recycling program?
- Is it a small item but you have a large quantity?

If you checked "yes" to any of these questions, your item does NOT qualify for Large Item Collection.

KEEP OUR NEIGHBOURHOODS CLEAN!

Do not set accepted items at curb more than 3 days prior to your collection week.

Only program accepted material will be collected.

Property owners are responsible for removing and disposing of items left behind that did not meet program requirements and any such items that have not been removed may be subject to Municipality By-Law fines.

2024 LARGE ARTICLE COLLECTION SCHEDULE

INGERSOLL

April 1 (Zone 1), April 8 (Zone 2), April 15 (Zone 3)

ZORRA

April 22

EAST ZORRA TAVISTOCK

May 6

NORWICH

May 13

BLANDFORD-BLENHEIM

May 27

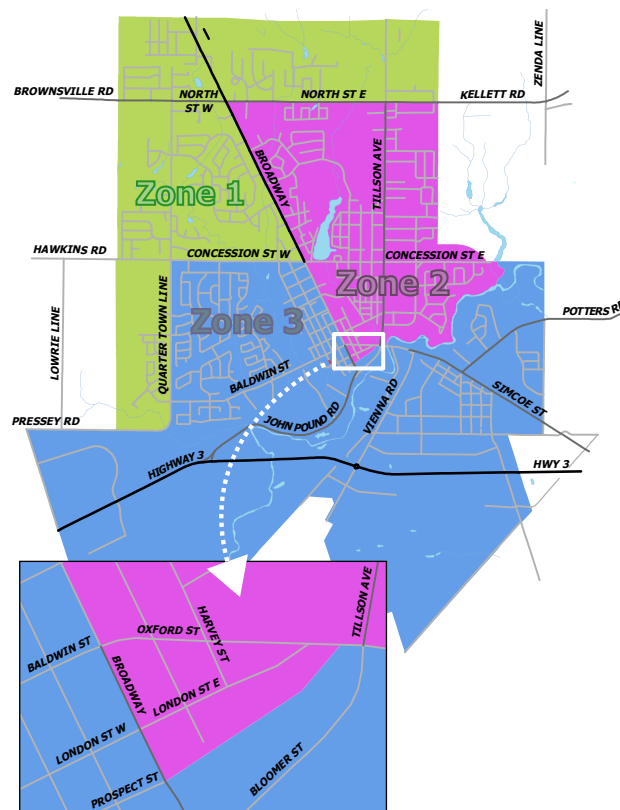
SOUTH-WEST OXFORD

June 3

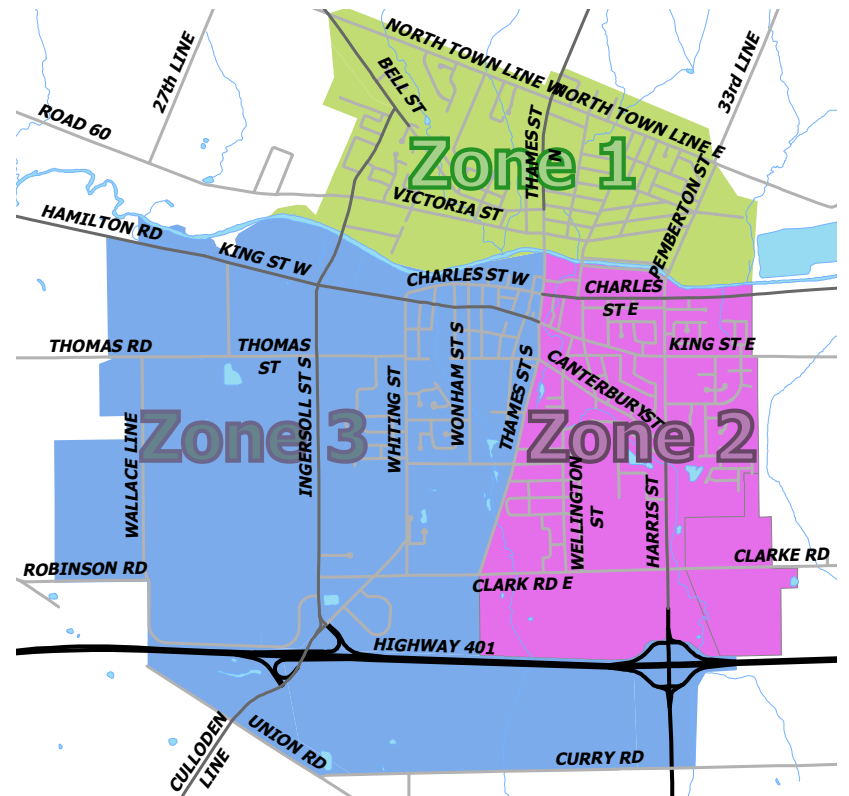
TILLSONBURG

June 17 (Zone 1), June 24 (Zone 2), July 2 (Zone 3)

TOWN OF TILLSONBURG LARGE ARTICLE COLLECTION



TOWN OF INGERSOLL LARGE ARTICLE COLLECTION



WASTE MANAGEMENT FACILITY

All loads must be tarped/secured

Construction and demolition material

Asphalt, concrete, masonry, untreated wood, wood scrap, pallets, gypsum drywall, asphalt shingles, porcelain toilets, glass

NOTE: Pressure treated wood is considered garbage.

Asbestos and contaminated soils requires special drop off arrangements

Please contact the Oxford County Waste Management Facility for instructions

LOCATION

384060 Salford Road, Salford

HOURS OF OPERATION

Monday – Friday 8:30 a.m. - 4:30 p.m.
Saturday 8:00 a.m. - 4:00 p.m.
Closed Sundays and Statutory Holidays

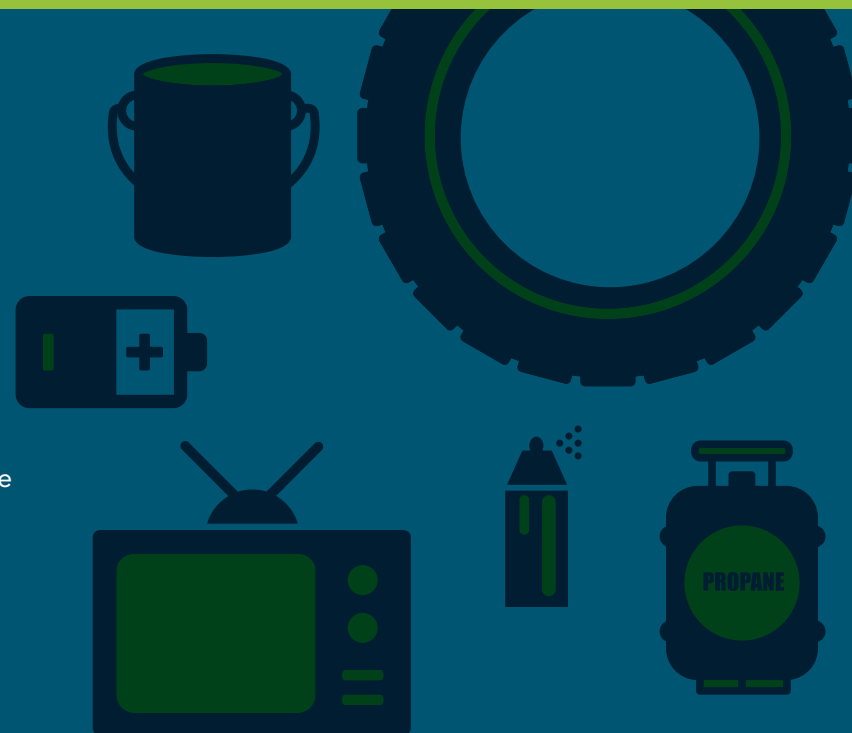
For more information, visit wasteline.ca or call 519-539-9800 or 1-866-537-7778

2023 TIPPING FEES*

- Garbage: \$89.00/ metric tonne
- Construction & Demolition: \$85.00 / metric tonne
- Freon units: \$10

PAYMENT OPTIONS

Cash, Debit, Visa and Mastercard



*Pricing for 2024 subject to change. Please refer to the Fees and Charges By-law for pricing details at oxfordcounty.ca.

WASTE DIVERSION PROGRAMS & DEPOTS

Bring the following items to the Waste Management Facility at no charge:

HOUSEHOLD RECYCLING

SCRAP METAL

LEAF AND YARD WASTE*

TIRES

Passenger and medium truck and off road tires, clean and on or off the rim, maximum 20 tires per customer per day

BULKY STYROFOAM*

Must be clean, dry and rigid

PLASTIC FILM*

Plastic shopping bags, plastic wrap, film packaging, etc.

HOUSEHOLD HAZARDOUS WASTE

Including paints, fluorescent light bulbs and tubes, propane tanks and aerosol cans, batteries, household chemicals

ELECTRONICS

Desktop and laptop computers, televisions and monitors, cameras, projectors, printing and scanning devices

CARDBOARD*

Must be flattened

TEXTILES

Ripped clothing and fabric, pillows, towels, linen, stuffed animals. Material must be cleaned and dry

AGRICULTURAL WRAP

Must be clean with dirt, rocks and organic matter removed

Charged a reduced tipping fee of \$50/tonne. For program rules, visit wasteline.ca

Woodstock EnviroDepot
(944 James Street)



Accepts all of the diversion programs listed as well as construction and demolition and bulky items. Fees may apply.

Tillsonburg Transfer Station
(50 Newell Street)



Accepts the diversion programs marked with an asterisk (*), bulky items, construction and demolition. Fees may apply.

Beachville Fire Hall
(434696 W Hill Line)



Accepts plastic film.



Tipping fees will apply if these items are in a mixed load with garbage or construction and demolition material.

FOOD WASTE REDUCTION

REDUCE YOUR GARBAGE BY UP TO 24% AND SAVE ON BAG TAG COSTS AT THE SAME TIME!

Compared to a green bin collection program, backyard composting eliminates the need for more large collection vehicles on the road; reducing greenhouse gas emissions and keeping Oxford's air clean.

YOU CAN REDUCE FOOD WASTE IN YOUR HOUSEHOLD BY:

- 1. Planning meals ahead of time**
- 2. Being a smart shopper**
Keep produce away from other items to avoid bruising. Bruising causes food to spoil more quickly.
- 3. Storing foods the right way**
Store cut vegetables in water to keep them fresh longer.
- 4. Stocking your pantry**
Stay well stocked with basic, nonperishable ingredients that can be used in a variety of meals.
- 5. Using leftovers wisely**
Shop your cupboards, fridge and freezer before buying more food. Enjoy being creative, saving money and wasting less food.

Did you know?
the average household throws away **\$1,766 worth of food waste each year?** It's equal to dropping a bag of paid groceries on the way out of the store each week

For more information and ideas, visit www.ontariofoodcollaborative.ca.



BRUSH, LEAF, AND YARD WASTE DEPOTS

There are 11 FREE depots located in Oxford County.

These depots are open 24 hours, 7 days a week.

BLANDFORD-BLENHEIM
895957 Oxford Road 3

INNERKIP
90 Main Street

TAVISTOCK
18 Hendershot Street

HICKSON
158 Loveys Street

NORWICH
285725 Airport Road

ZORRA
783045 Road 78

INGERSOLL
80 Pemberton Street

SPRINGFORD
432594 Zenda Line

These hours are subject to change. Check wasteline.ca or your local municipal office for hours of operation.

OXFORD COUNTY WASTE MANAGEMENT FACILITY
384060 Salford Road

TILLSONBURG
50 Newell Road

WOODSTOCK
944 James Street

YES

ACCEPTED LEAF AND YARD MATERIAL:

- Grass
- Hedge and tree trimmings (less than 7cm diameter)
- Leaves
- Halloween pumpkins
- House and garden plants

YES

ACCEPTED BRUSH MATERIAL:

- Brush (limbs longer than 1.8m will not be accepted)
- Christmas trees

NO

NOT ACCEPTED:

- Garbage
- Plastic bags
- Old fencing
- Hazardous waste
- Topsoil
- Sod
- Rocks
- Stumps



BUSINESS WASTE MANAGEMENT

Businesses located on an existing residential collection route may be able to participate in the curbside collection program as long as they meet the set-out requirements.

PROGRAM REQUIREMENTS

Ensure all garbage bags are tagged and tags are visible.

- Only place recyclables accepted in Oxford County's Blue Box Program.
- There is no limit to the number of garbage or recycling containers placed at the curb.
- Contact Oxford County if you wish to purchase a 360L cart for your business recycling. Restrictions apply

CARDBOARD REQUIREMENTS

Businesses are big producers of cardboard. For this material to be collected curbside, follow these guidelines:

- Must be bundled and secured with twine.
- Cannot be more than 75cm x 75cm x 20cm
- Cannot weigh more than 44lbs (20kgs)

SPECIALTY RECYCLING DEPOTS

There are several specialty recycling depots located at the Oxford County Waste Management Facility to help divert waste from the landfill, including depots for bulky styrofoam, cardboard, construction and demolition waste, clothing and textiles, electronics, Freon-containing appliances, leaf and yard waste, scrap metal and tires.

Note: Tipping fees may apply. Visit www.wasteline.ca under "Waste Management Facility" for a list of applicable tipping fees.

BECOME A BAG TAG VENDOR

If you own or operate a business such as an independent/ franchise variety/ convenience store or grocery store, drugstore, independent retail outlet, or 24-hour business, you may want to consider becoming a bag tag vendor. Some restrictions apply.

Learn more at www.wasteline.ca.



UPCOMING CHANGES TO ONTARIO'S BLUE BOX PROGRAM

In June 2021, the Government of Ontario announced new recycling regulations, including significant changes to Ontario's blue box program. Producers who create products and packaging will be responsible for providing recycling services. This change:

- promotes waste diversion;
- aligns the cost of managing products and packaging at their end-of-life to those responsible; and,
- gives producers an incentive to redesign products to make them easier to recycle.

As part of this change, we expect blue box material sorting to be standardized across the province, meaning what you set out in your blue box could change.

Moving all of Ontario's municipally-run blue box programs to full producer responsibility will occur over three years between July 2023 and December 2025. Oxford County will transition to the new program on December 31, 2025. Oxford County will continue to manage the curbside collection of garbage and bulky items.

For information and updates, please visit www.wasteline.ca.

WASTE MANAGEMENT & EDUCATION CENTRE

The Oxford County Waste Management & Education Centre is a state-of-the-art facility located in Salford, ON. It is designed, constructed and operated to help reach Oxford County's commitment to 100% renewable energy by 2050 and zero waste by 2025.

Opened in June 2018, the Waste Management & Education Centre is equipped to educate and inspire students on matters relating to sustainability, zero waste and renewable energy. The centre features a variety of sustainable technologies, including enough solar photovoltaic panels to offset the electricity use of the entire landfill site, bringing energy consumption for all landfill operations – including the scale house – to net-zero.

The Education Centre offers a number of interactive displays relating to renewable energy and waste management, including a waste sorting wall, a comparison of electricity needs for various types of lights and more. Oxford County welcomes the opportunity to partner with community organizations to offer engaging educational experiences.

Anyone interested in a tour can contact the Oxford County Public Works Department at 1-866-537-7778.

Committed to 
100% RE | Zero Waste | Zero Poverty



FutureOxford

Future Oxford presents a vision to foster and maintain a high quality of life throughout Oxford. It is a vision that inspires community members to explore and expand the potential to improve quality of life for Oxford's current and future generations. It is a vision that respects who we already are, and sees the possibilities of who we can be.

Future Oxford: A Community Sustainability Plan is the plan for how we will achieve this vision. The plan is guided by the Future Oxford Collective, a group of volunteers and partners advancing the Future Oxford Plan through collaboration, education and promotion.

For more information and to read the Future Oxford Plan online, visit www.futureoxford.ca.

ADVANCING ZERO WASTE

In 2016, Oxford County Council received its first draft Zero Waste Plan in support of its commitment to achieving Zero Waste in Oxford County. Working with the Zero Waste Oxford Action Committee to implement Future Oxford's objectives, much has been done to understand Oxford's waste composition and our opportunities to reduce waste and recover resources.

TRY A ONE-WEEK WASTE AUDIT

Knowing what's in your trash is the first step to preventing and reducing waste. Zero Waste Oxford has developed a waste audit tool to give you a snapshot of how much you throw out in a typical week. Download it today at www.futureoxford.ca/resources.

ALTERNATE WASTE OPTIONS

Your garbage bin or the landfill isn't the only option for items you no longer use. Many items can be donated, sold or up-cycled. Look for local donation stores, or other re-use options before disposing of unwanted goods. Some non-profit groups will arrange curbside pickup of unwanted goods (e.g., Canadian Diabetes Association, Kidney Foundation of Canada, etc.).

OXFORD COUNTY DONATIONS/REUSE CENTERS

INGERSOLL

Goodwill Donation Center
70 Thames Street N., Ingersoll, ON
519-303-3100

The Salvation Army
48 Charles Street W., Ingersoll, ON
519-485-4961

The This and That Store
50 Thames Street South,
Ingersoll, ON
226-228-7501

WOODSTOCK

Goodwill Community Store & Donation Centre
902 Dundas Street, Woodstock, ON
519-539-5192

The United Way of Oxford County
447 Hunter Street, Woodstock, ON
519-539-3851

TILLSONBURG

Goodwill Community Store & Donation Centre
79 Simcoe St, Tillsonburg, ON
519-688-9811

Salvation Army
155 Broadway, Tillsonburg, ON
519-842-9491

Onwards Thrift
165 Tillson Ave, Tillsonburg, ON
519-409-5500

NORWICH

Salvation Army Thrift Store
18 Main Street W., Norwich, ON
519-863-6375

SOUTH WEST OXFORD

Oxford County Waste Management Facility
384060 Salford Rd., South West
Oxford, ON
519-539-9800

DEPARTMENTS & SERVICES

519-539-9800 | 1-866-537-7778



CAO & CLERK'S OFFICE
Ext. 3001

EMERGENCY PLANNING
Ext. 3522
www.oxford72hours.ca

PUBLIC WORKS
Ext. 3900
publicworks@oxfordcounty.ca
oxfordcounty.ca/publicworks

WASTE MANAGEMENT
Ext. 3159
wastemanagement@oxfordcounty.ca
oxfordcounty.ca/waste

COMMUNITY PLANNING
Ext. 3192
planning@oxfordcounty.ca
oxfordcounty.ca/planning

HUMAN RESOURCES
Ext. 3156
hr@oxfordcounty.ca

PARAMEDIC SERVICES
Ext. 3464
oxfordcounty.ca/paramedics

WOODINGFORD LODGE
Woodstock: 519-421-5556
Ingersoll: 519-485-7053
Tillsonburg: 519-688-4874
oxfordcounty.ca/woodingford

STRATEGIC COMMUNICATIONS AND ENGAGEMENT
Ext. 3503
communications@oxfordcounty.ca
oxfordcounty.ca/newsroom

HUMAN SERVICES
Ext. 3390 Select "1"
humanservices@oxfordcounty.ca
oxfordcounty.ca/humanservices

OXFORD COUNTY LIBRARY
www.ocl.net

CORPORATE SERVICES
Press "0" for Customer Service

ARCHIVES
Ext. 3918

TOURISM OXFORD
Ext. 3359
Toll-Free: 1-866-801-7368
www.tourismoxford.ca

CUSTOMER SERVICE
519-539-9800
Ext. 3915 Select "2"
Toll-Free: 1-866-537-7778
customerservice@oxfordcounty.ca